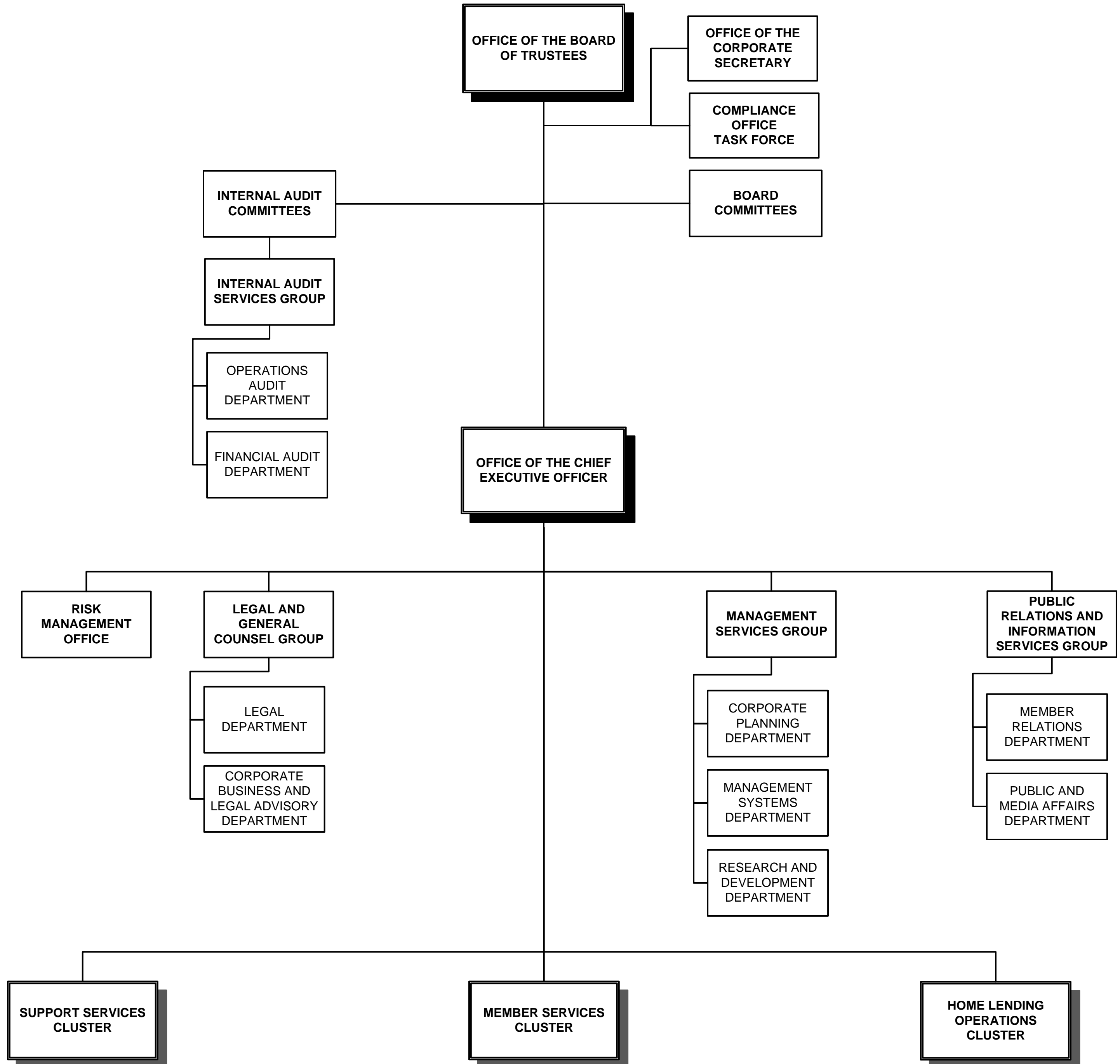




Pag-IBIG Fund Interim Organizational Structure

Executive and Management Offices

as of December 31, 2024

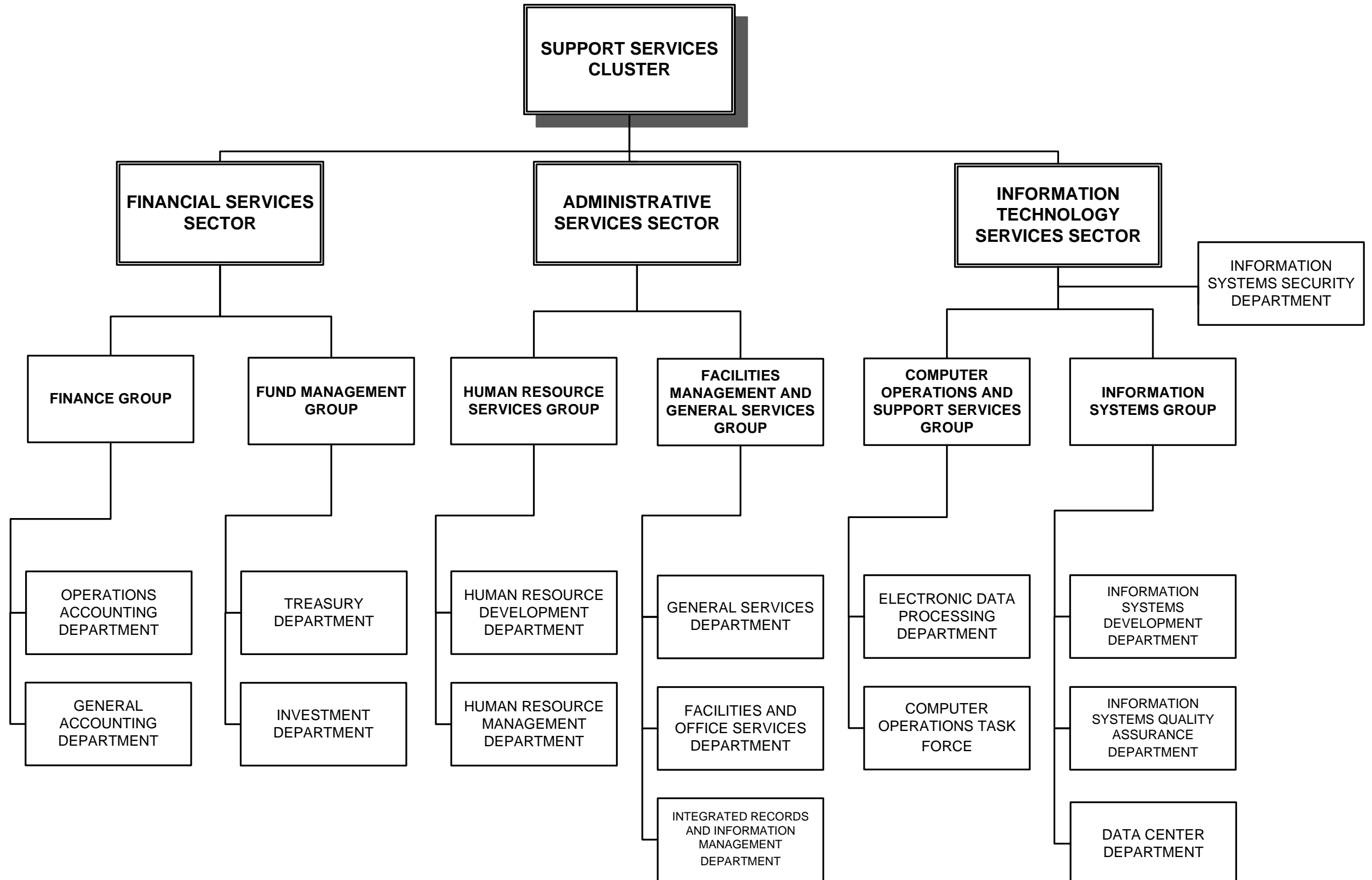




Pag-IBIG Fund Interim Organizational Structure

Support Services Cluster

as of December 31, 2024

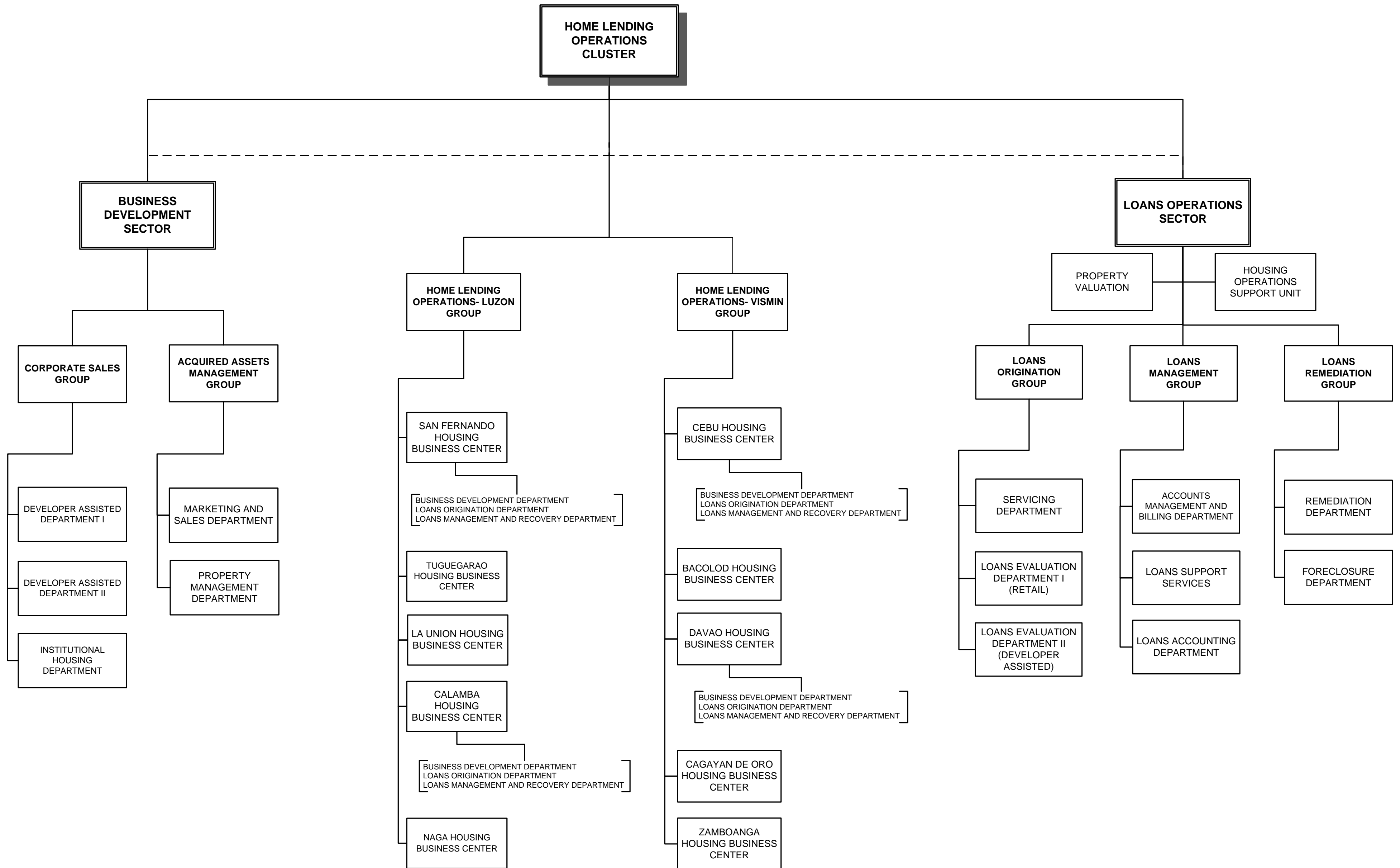




Pag-IBIG Fund Interim Organizational Structure

Home Lending Operations Cluster

as of December 31, 2024





Pag-IBIG Fund Interim Organizational Structure

Member Services Operations – NCR

as of December 31, 2024

MEMBER SERVICES CLUSTER

MEMBER SERVICES OPERATIONS SECTOR

LOYALTY CARD UNIT

MEMBER SERVICES SECTOR SUPPORT UNIT

OTHER WORKING GROUP (OWG) PROJECT TEAM

MEMBER SERVICES OPERATIONS-NCR NORTH EAST GROUP

NCR TECHNICAL AND ADMINISTRATIVE SUPPORT GROUP

MEMBER SERVICES OPERATIONS-NCR SOUTH WEST GROUP

INTERNATIONAL OPERATIONS GROUP

MEMBER SERVICES OPERATIONS-NCR NORTH

- CUBAO BRANCH
- CALOOCAN-EDSA BRANCH
- GMA KAMUNING BRANCH
- QUEZON AVENUE BRANCH
- COMMONWEALTH AVENUE BRANCH
- VALENZUELA BRANCH
- MARIKINA BRANCH
- SAN JUAN BRANCH
- MALABON BRANCH
- DILIMAN-DHSUD BRANCH
- ADDITIONAL BRANCHES

MEMBER SERVICES OPERATIONS-NCR EAST

- AYALA MALLS THE 30TH BRANCH
- ANTIPOLO BRANCH
- MANDALUYONG - SHAW CENTRUM BRANCH
- TANAY BRANCH
- ADDITIONAL BRANCHES

TECHNICAL AND ADMINISTRATIVE SUPPORT-NCR NORTH

- CASH AND ADMINISTRATIVE SERVICES DIVISION
- GENERAL ACCOUNTING AND BUDGET MANAGEMENT DIVISION
- MC ACCOUNTING DIVISION
- STL ACCOUNTING DIVISION
- BILLING AND COLLECTION DIVISION

TECHNICAL AND ADMINISTRATIVE SUPPORT-NCR EAST

- CASH AND ADMINISTRATIVE SERVICES DIVISION
- GENERAL ACCOUNTING AND BUDGET MANAGEMENT DIVISION
- MC ACCOUNTING DIVISION
- STL ACCOUNTING DIVISION
- BILLING AND COLLECTION DIVISION

TECHNICAL AND ADMINISTRATIVE SUPPORT-NCR SOUTH

- CASH AND ADMINISTRATIVE SERVICES DIVISION
- GENERAL ACCOUNTING AND BUDGET MANAGEMENT DIVISION
- MC ACCOUNTING DIVISION
- STL ACCOUNTING DIVISION
- BILLING AND COLLECTION DIVISION

TECHNICAL AND ADMINISTRATIVE SUPPORT-NCR WEST

- CASH AND ADMINISTRATIVE SERVICES DIVISION
- GENERAL ACCOUNTING AND BUDGET MANAGEMENT DIVISION
- MC ACCOUNTING DIVISION
- STL ACCOUNTING DIVISION
- BILLING AND COLLECTION DIVISION

TECHNICAL AND ADMINISTRATIVE SUPPORT-CAVITE

- CASH AND ADMINISTRATIVE SERVICES DIVISION
- GENERAL ACCOUNTING AND BUDGET MANAGEMENT DIVISION
- MC ACCOUNTING DIVISION
- STL ACCOUNTING DIVISION
- BILLING AND COLLECTION DIVISION

MEMBER SERVICES OPERATIONS-NCR SOUTH (Makati CBD)

- PASEO DE ROXAS BRANCH
- MAGALLANES-SOUTH GATE MALL BRANCH
- BIÑAN BRANCH
- ADDITIONAL BRANCHES

MEMBER SERVICES OPERATIONS-NCR SOUTH (Outside Makati CBD)

- MAKATI – JUPITER BRANCH
- GUADALUPE – EDSA BRANCH
- MUNTINLUPA BRANCH
- SM AURA-BRANCH
- AYALA MALLS CIRCUIT BRANCH
- TAGUIG – GATE 3 PLAZA BRANCH
- MAKATI – BEL-AIR BRANCH
- ADDITIONAL BRANCHES

MEMBER SERVICES OPERATIONS-NCR WEST

- INTRAMUROS BRANCH
- BINONDO BRANCH
- PASAY BRANCH
- STA. MESA BRANCH
- LAS PIÑAS-ROBINSONS PLACE BRANCH
- PARAÑAQUE BRANCH
- ADDITIONAL BRANCHES

MEMBER SERVICES OPERATIONS-CAVITE

- IMUS BRANCH
- ROSARIO BRANCH
- DASMARIÑAS BRANCH
- TAGAYTAY BRANCH
- ADDITIONAL BRANCHES

OFW CENTER OPERATIONS DEPARTMENT

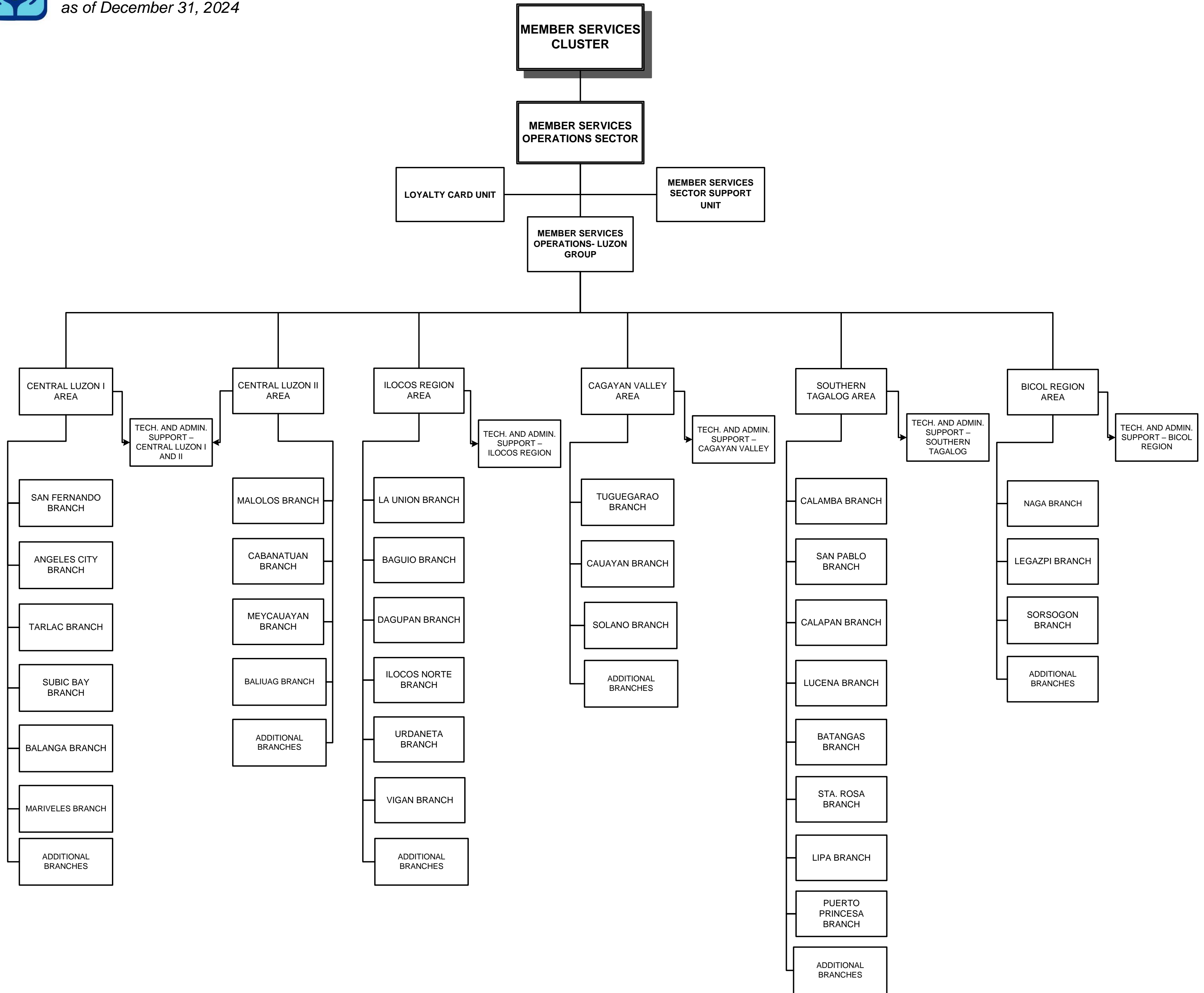
OFW TECHNICAL AND ADMINISTRATIVE SERVICES DEPARTMENT



Pag-IBIG Fund Interim Organizational Structure

Member Services Operations – Luzon

as of December 31, 2024





Pag-IBIG Fund Interim Organizational Structure

Member Services Operations – Visayas-Mindanao

as of December 31, 2024

